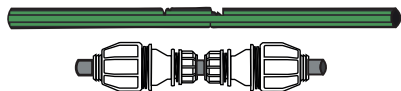


## Rural Pipe

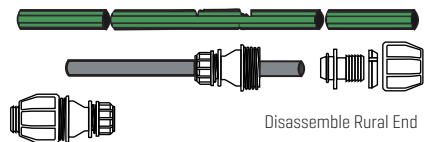
1

Pipe damage example.



2

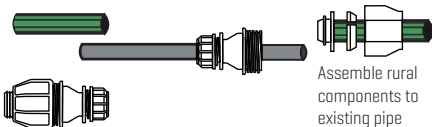
Cut damage section to within min/max limits.



Disassemble Rural End

3

Slide Repair Pipe into one Rural prepared side.

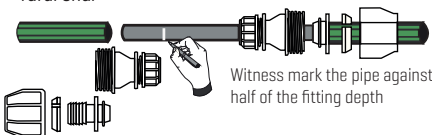


Assemble rural components to existing pipe

Keep one fitting assembly to the side

4

Slide repair pipe into fitting and begin to attach rural end.



Witness mark the pipe against half of the fitting depth

Disassemble second rural end

5

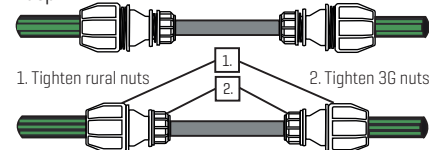
Slide repair pipe into fitting ensuring that you can still grab hold of it.



Prepare the second rural joint

6

Slide repair pipe into the fitting to witness mark depth.



1. Tighten rural nuts

2. Tighten 3G nuts

### For more information

Ph: 1800 755 899

[www.philmac.com.au](http://www.philmac.com.au)

[www.youtube.com/user/PhilmacAustralia](https://www.youtube.com/user/PhilmacAustralia)



# Philmac

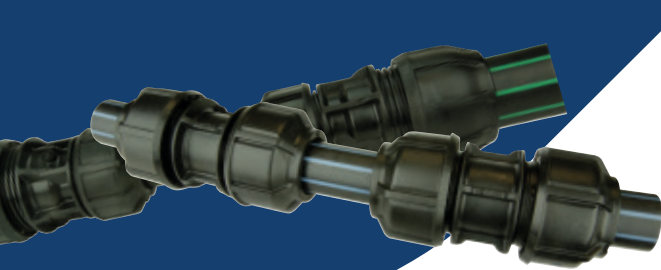
The connection you can trust.

## Pipe Repair Kit

### THE CONNECTION YOU CAN TRUST

Designed to enable fast and simple pipe repair to Metric and Rural systems





Philmac has released a range of pipe repair kits in common metric and rural sizes.

The range is based on the successful 3G Metric and Rural fittings platforms and is provided in a handy package that includes a length of straight pipe, specialised Philmac fittings and step by step easy to follow installation instructions.

This product speeds up the repair process by minimising the amount of soil to be removed to undertake the repair. The Repair Kit will ensure you have everything on hand to complete the repair quickly and efficiently.

## Benefits

### Fast and Easy Installation

Step by step instructions are provided on the product packaging. A simple 6 step process ensures the pipe is repaired quickly with a minimum of fuss.

### Repair Pipe

The pipe sample provided meets or exceeds the pressure performance rating of the system and is sufficient in length to adequately cover typical repair requirements.

### Minimal Dig

The design of the repair system will ensure that you only need to remove a limited area of soil compared to the traditional repair process, thereby reducing the overall time required to undertake the repair.

### High Performance Materials

The repair system utilises Philmac fittings that are widely used and relied upon by producers across Australia.

Every farm should have a couple hanging in the shed ready to go when required.

Metric available in 25, 32, 40 and 50 mm.

Rural available in 1", 1¼", 1½", 2".

# Installation Instructions

## Metric Pipe

1

Cut existing pipe square to within min/max limits & measure gap.



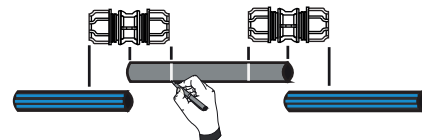
2

Cut repair pipe to fit with max gap of 5mm.



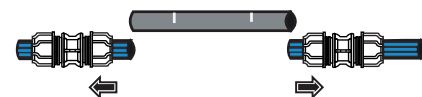
3

Witness mark repair pipe at each end using the centre of body to nuts end.



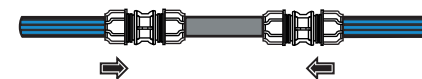
4

Slide each repair fitting fully onto the existing pipe and place repair pipe into the gap.



5

Slide fittings over repair pipe to the witness marks.



6

Tighten all nuts to the flange.

